



T16-ISO Optional Accessories



T16-ISO Field Unit Concept

Product includes:	
P002921	T16-ISO Instrument
PC003354	12 V DC External Power Supply (with multiple world adapters)
	Product Manual
P003251	T16 Desktop Software
Optional:	
P004052	External 12 V Li-Ion Battery for field application
P004339	Portable Label Printer
P004054	Barcode Scanner
P002936	Transit Case for field applications
P002925	Mixing Magnets

For further product information or advice on selecting the appropriate instrument configuration contact Axxin at sales@axxin.com

Axxin T16 Isothermal Instrument

Axxin provides platforms and diagnostic products for biomedical applications that bridge the gap from research to market with world leading innovation, capability and cost effectiveness. Axxin's advanced isothermal instrument operates at constant temperature and enables the next generation of diagnostic DNA/RNA amplification in a compact, low cost, stand alone, sensitive instrument suitable for field based and point of care diagnostics applications.



T16-ISO Instrument

Key Features

- Supports two banks of 8 well standard 200µL tubes providing 16 tube testing in a single test run
- Three channel fluorescence detection per tube for multiplex testing
- Instrument configurable for standalone operation or PC connected modes
- Easy to use advanced Desktop Software for research applications
- Desktop Software supports two T16 instruments simultaneously enabling 32 tube testing
- 3.4" LCD Touch Screen, Graphical User Interface for advanced workflow management
- Interchangeable modular optical head, configurable for multiple channels
- Testing temperature range of 37°C to 65°C
- Small footprint, suitable for bench top and field applications
- USB and Ethernet connectivity for Data transfer and LIS integration
- Flexible test profile creation and advanced data presentation and export
- Optional External Rechargeable Li-Ion Battery for remote or field based applications



Australian Office
Ground Floor, 582 Heidelberg Rd
Fairfield, VIC, 3078, Australia
T + 61 3 9329 1167
F + 61 3 8732 0310
ABN 43 120 905 839

USA Office
400 Continental Blvd, 6th Floor
El Segundo, CA, 90245, USA
T + 1 858 736 9160
F + 1 858 346 9300

UK Office
18 King William Street
London, EC4R 9AN, UK
T + 44 (0) 203 960 7512

www.axxin.com
sales@axxin.com



© 2020 Axxin
All rights reserved
D002761v7

Australian Office
Ground Floor, 582 Heidelberg Rd
Fairfield, VIC, 3078, Australia
T + 61 3 9329 1167
F + 61 3 8732 0310
ABN 43 120 905 839

USA Office
400 Continental Blvd, 6th Floor
El Segundo, CA, 90245, USA
T + 1 858 736 9160
F + 1 858 346 9300

UK Office
18 King William Street
London, EC4R 9AN, UK
T + 44 (0) 203 960 7512

www.axxin.com
sales@axxin.com





Real Time Assay Analysis

Features

- Multiplex Testing up to 16 wells
- 3 Fluorescent Channels per tube
- Bank two T16's for 32 tube testing
- Temperature range 37°C to 65°C
- 3.4" LCD Touch Screen
- GUI Workflow Management
- Standard 200µL PCR tube compatible
- Qualitative and Quantitative Analysis
- Multi-well Graphical views
- Graphical Overlay views
- Assay Optimization and Design
- Assay QC monitoring
- USB and Ethernet Communications
- Extensive Export options including result files, CSV files and graphs

Test Type Configuration

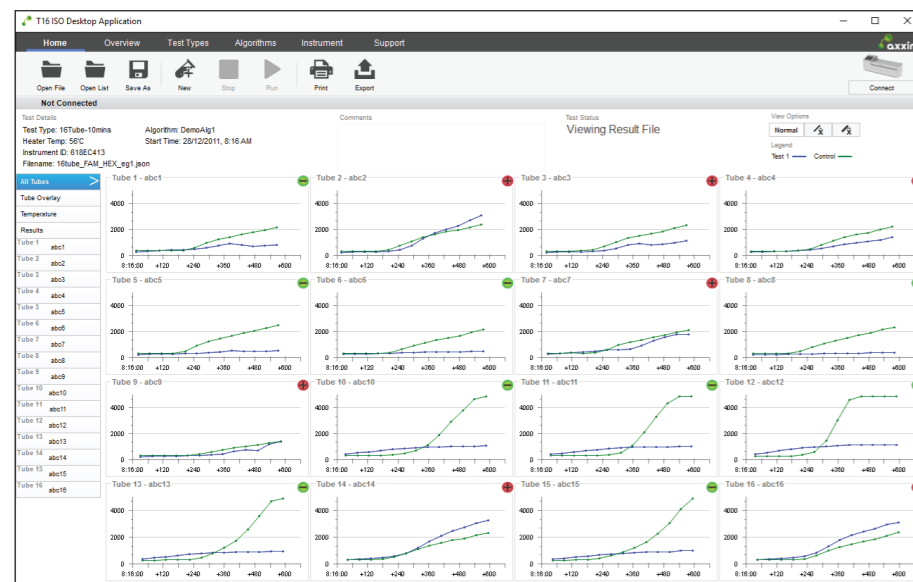
- Select up to 16 Wells for a single test
- Define Test Time Duration
- Set Control and up to 2 Test Channels
- Set Temperature Profile 37°C to 65°C
- Configure Test Workflow Actions: Read, Pause & Lid Action

Decision Algorithm Design

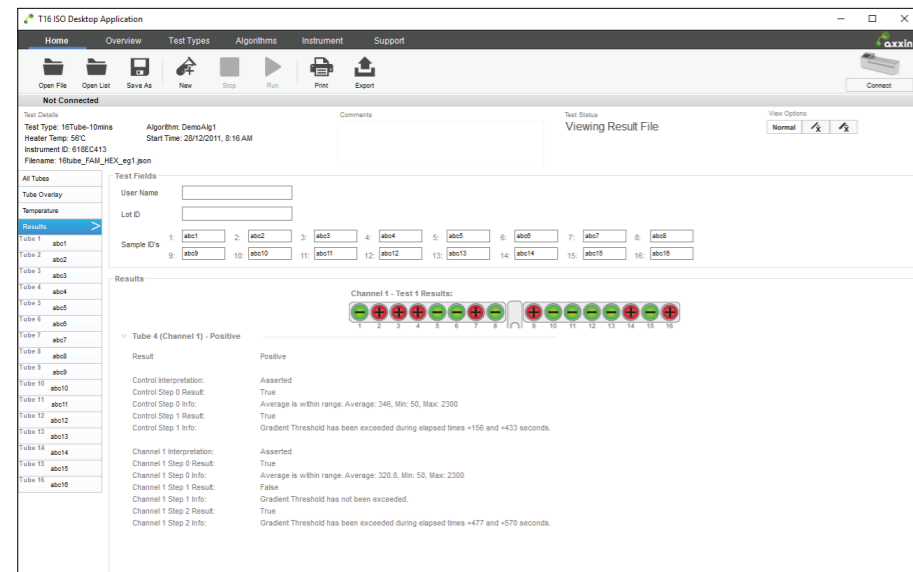
- Define Control and up to 2 Test Channels
- Customize Algorithms using parameters: Initial Average, Gradient and Threshold
- Set up Decision Logic matrices
- Test previously run results on newly designed Algorithms

Result History Management

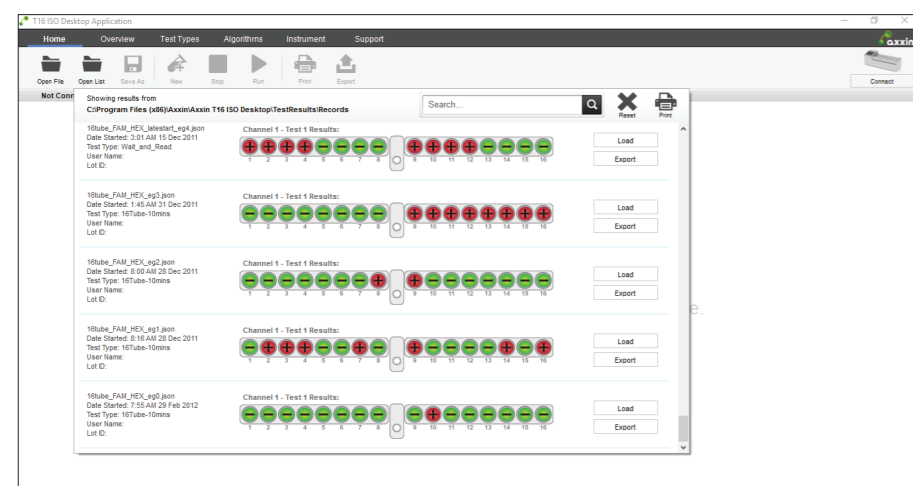
- Manage large Test Result data sets
- Load previously run results for further analysis
- Quickly analyse groups of results



Graphical Overview



Test Result Display



Data Set Overview and Management

Specifications	
Block Configuration:	16 Tubes - 2 x 8 Tube Banks (200µL format)
Display:	3.4" LCD Touch Screen
Communications:	Ethernet Network connection USB Port for data export, Barcode Reader and Printer mini USB port for PC connection GUI Interface with icon driven menu prompts
Data Storage:	On board storage for up to 99 results (configurable) History Records allow search and retrieval Archive or export via USB/Ethernet
Operating Temperature Range:	37.0°C to 65.0°C
Temperature Control:	PID temperature control with 0.5°C resolution
Printer Support:	Postscript 3 compatible network printer
Interface:	USB 2.0 (Type A) USB (Type mini AB), for use with Desktop Software Ethernet (RJ-45)
Power:	3.5A, 12V DC, External Power Pack
Environmental Operation:	10°C to + 30°C RH 20% to 70%, non-condensing Altitude of up to 2000m
Environmental Storage:	2°C to + 45°C RH 20% to 70%, non-condensing
Dimensions:	14.0" x 4.8" x 5.4" (L x W x H) 380 mm x 122 mm x 138 mm (L x W x H)
Net Weight:	4.4lb , 2.0kg
Warranty:	12 Months return to base. Upgrade Available.

Spectrofluorometer	
Excitation Source:	LED
Excitation Detection:	FAM, HEX, ROX Channels
Excitation and Emission Range:	350 to 700 nm
Number of Fluorophores:	3 Channels simultaneously



Australian Office
Ground Floor, 582 Heidelberg Rd
Fairfield, VIC, 3078, Australia
T + 61 3 9329 1167
F + 61 3 8732 0310
ABN 43 120 905 839

USA Office
400 Continental Blvd, 6th Floor
El Segundo, CA, 90245, USA
T + 1 858 736 9160
F + 1 858 346 9300

UK Office
18 King William Street
London, EC4R 3AN, UK
T + 44 (0) 203 960 7512

www.axxin.com
sales@axxin.com

