

Axxin T8 Isothermal Instrument

Axxin provides platforms and diagnostic products for biomedical applications that bridge the gap from research to market with world leading innovation, capability and cost effectiveness. Axxin's advanced isothermal instrument operates at constant temperature and enables the next generation of diagnostic DNA/RNA amplification in a compact, low cost, stand alone, sensitive instrument suitable for field based and point of care diagnostics applications.



T8-ISO Instrument

Key Features

- Supports one row of 8 well standard 200 μ L tubes in a single test run
- Two channel fluorescence detection per tube for multiplex testing
- Instrument configurable for standalone operation or PC connected modes
- Easy to use advanced Desktop Software for research and development
- Flexible test type creation and advanced data presentation and export
- Large 4.3" LCD Touch Screen, Graphical User Interface for advanced workflow management
- Optional External Rechargeable Li-Ion Battery for remote or field based applications
- USB and Ethernet connectivity for Data transfer and LIS integration
- Small footprint, suitable for bench top and field applications
- Testing temperature range of 37 $^{\circ}$ C to 65 $^{\circ}$ C
- Real Time on screen detailed curve analysis
- Real Time Result calling during test



Australian Office
Ground Floor, 582 Heidelberg Rd
Fairfield, VIC, 3078, Australia
T + 61 3 9329 1167
F + 61 3 8732 0310
ABN 43 120 905 839

USA Office
400 Continental Blvd, 6th Floor
EL Segundo, CA, 90245, USA
T + 1 858 736 9160
F + 1 858 346 9300

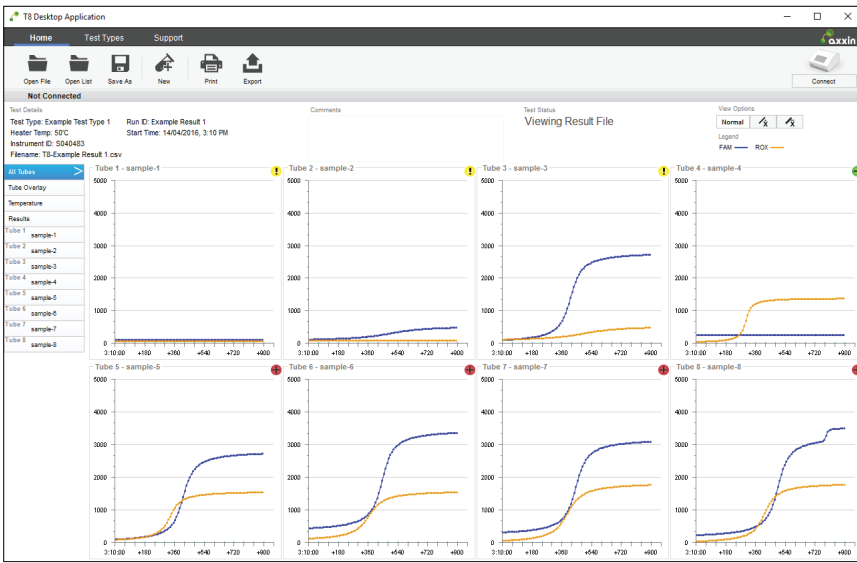
UK Office
45 King William Street
London, EC4R 9AN, UK
T + 44 (0) 203 714 5650

www.axxin.com

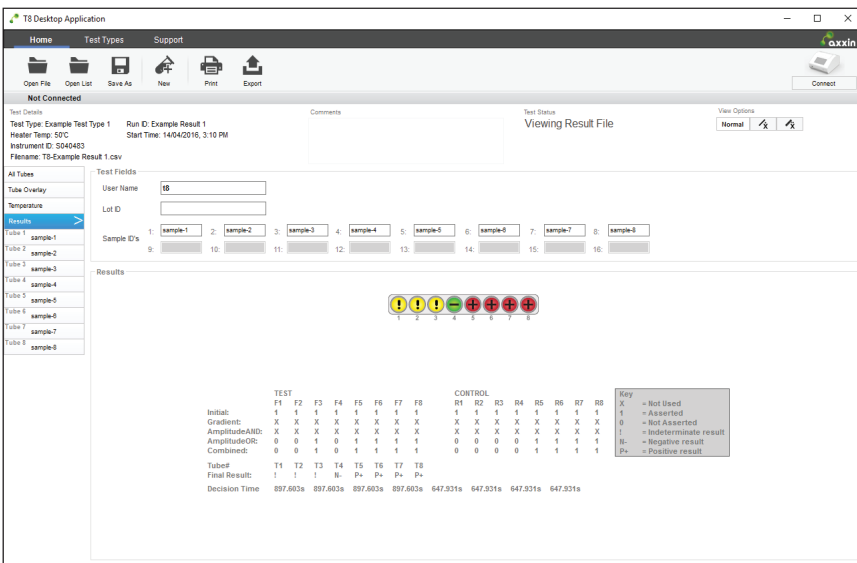
sales@axxin.com



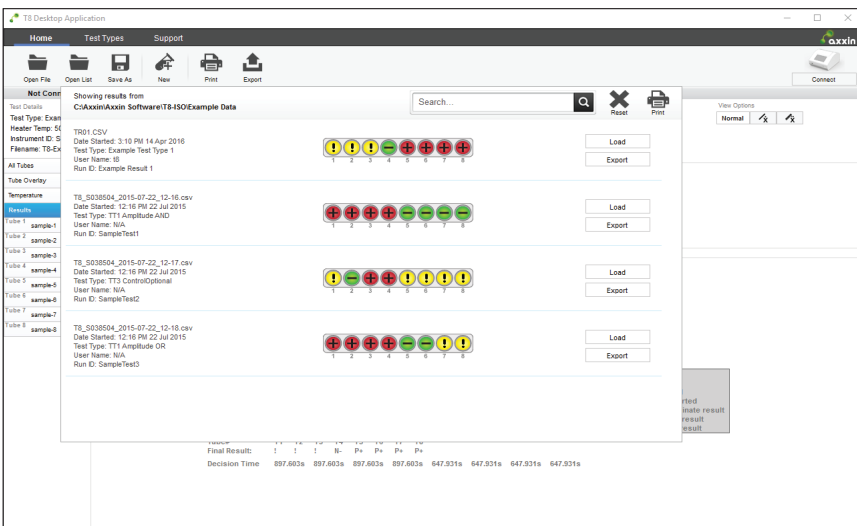
T8 Desktop Software Application



Graphical Overview



Test Result Display



Data Set Overview and Management

Real Time Assay Analysis

Features

- Multiplex Testing up to 8 wells
- 2 Fluorescent Channels per tube
- Temperature range 37°C to 65°C
- 4.3" LCD Touch Screen
- GUI Workflow Management
- Standard 200µL PCR tube compatible
- Qualitative and Quantitative Analysis
- Real Time Result Calling
- Multi-well Graphical views
- Graphical Overlay views
- Assay Optimization and Design
- Assay QC monitoring
- USB and Ethernet Communications
- Extensive Export options including result files, CSV files and graphs

Test Type Configuration

- Select up to 8 Wells for a single test
- Adjust scan sample rate for precise optical readings
- Define Test Time Duration
- Set Control and Test Channel
- Set Temperature Profile 37°C to 65°C
- Configure Test Workflow Actions: Read, Pause, Lid Action & Mixing

Decision Algorithm Design

- Define Control and Test Channels independently
- Use visually aided workflow graphs to accurately define algorithm sequences
- Customize Algorithms using parameters: Initial Average, Gradient and Threshold
- Set up Decision Logic matrices
- Test previously run results on newly designed Algorithms

Result History Management

- Manage large Test Result data sets
- Load previously run results for further analysis
- Quickly analyse groups of results

Specifications

Block Configuration:	8 Tubes - 1 x 8 Tube Bank (200µL format)
Display:	4.3" LCD Touch Screen
Communications:	Ethernet Network connection USB Port for data import/export mini USB port for PC connection x2 Serial ports for Printer & Barcode Scanner GUI Interface with icon driven menu prompts
Data Storage:	On board storage for up to 50 results (configurable) History Records allow search and retrieval Archive or export via USB/Ethernet
Operating Temperature Range:	37.0°C to 65.0°C
Temperature Control:	PID temperature control with 0.5°C resolution
Interface:	USB 2.0 (Type A) USB (Type mini AB), for use with Desktop Software Ethernet (RJ-45) x2 Serial Ports (mini DIN)
Power:	3.5A, 12V DC, External Power Pack
Environmental Operation:	10°C to + 30°C RH 20% to 70%, non-condensing Altitude of up to 2000m
Environmental Storage:	2°C to + 45°C RH 20% to 70%, non-condensing
Dimensions:	7.3" x 8.0" x 4.3" (L x W x H) 185 mm x 203 mm x 110 mm (L x W x H)
Net Weight:	5.1lb , 2.3kg
Warranty:	12 months return to base. Upgrade Available.

Spectrofluorometer

Excitation Source:	LED
Excitation Detection:	FAM, HEX, ROX Channels
Excitation and Emission Range:	350 to 700 nm
Number of Fluorophores:	2 Channels simultaneously



Australian Office
Ground Floor, 582 Heidelberg Rd
Fairfield, VIC, 3078, Australia
T + 61 3 9329 1167
F + 61 3 8732 0310
ABN 43 120 905 839

USA Office
400 Continental Blvd, 6th Floor
EL Segundo, CA, 90245, USA
T + 1 858 736 9160
F + 1 858 346 9300

UK Office
45 King William Street
London, EC4R 9AN, UK
T + 44 (0) 203 714 5650

www.axxin.com

sales@axxin.com





T8-ISO Optional Accessories

T8-ISO Field Unit Concept

Australian Office
Ground Floor, 582 Heidelberg Rd
Fairfield, VIC, 3078, Australia
T + 61 3 9329 1167
F + 61 3 8732 0310
ABN 43 120 905 839

USA Office
400 Continental Blvd, 6th Floor
EL Segundo, CA, 90245, USA
T + 1 858 736 9160
F + 1 858 346 9300

UK Office
45 King William Street
London, EC4R 9AN, UK
T + 44 (0) 203 714 5650

www.axxin.com
sales@axxin.com



Product includes:	
P003843	T8-ISO Instrument
PC003354	12 V DC External Power Supply (with multiple world adapters)
	Product Manual
P003970	T8 Desktop Software
Optional:	
P004052	External 12 V Li-Ion Battery for field application
P004339	Portable Label Printer
P004054	Barcode Scanner
P002936	Transit Case for field applications

For further product information or advice on selecting the appropriate instrument configuration contact Axxin at sales@axxin.com